

**WELCOME TO  
NAUKLUFT  
NAMIB-NAUKLUFT PARK**

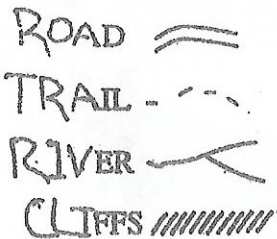
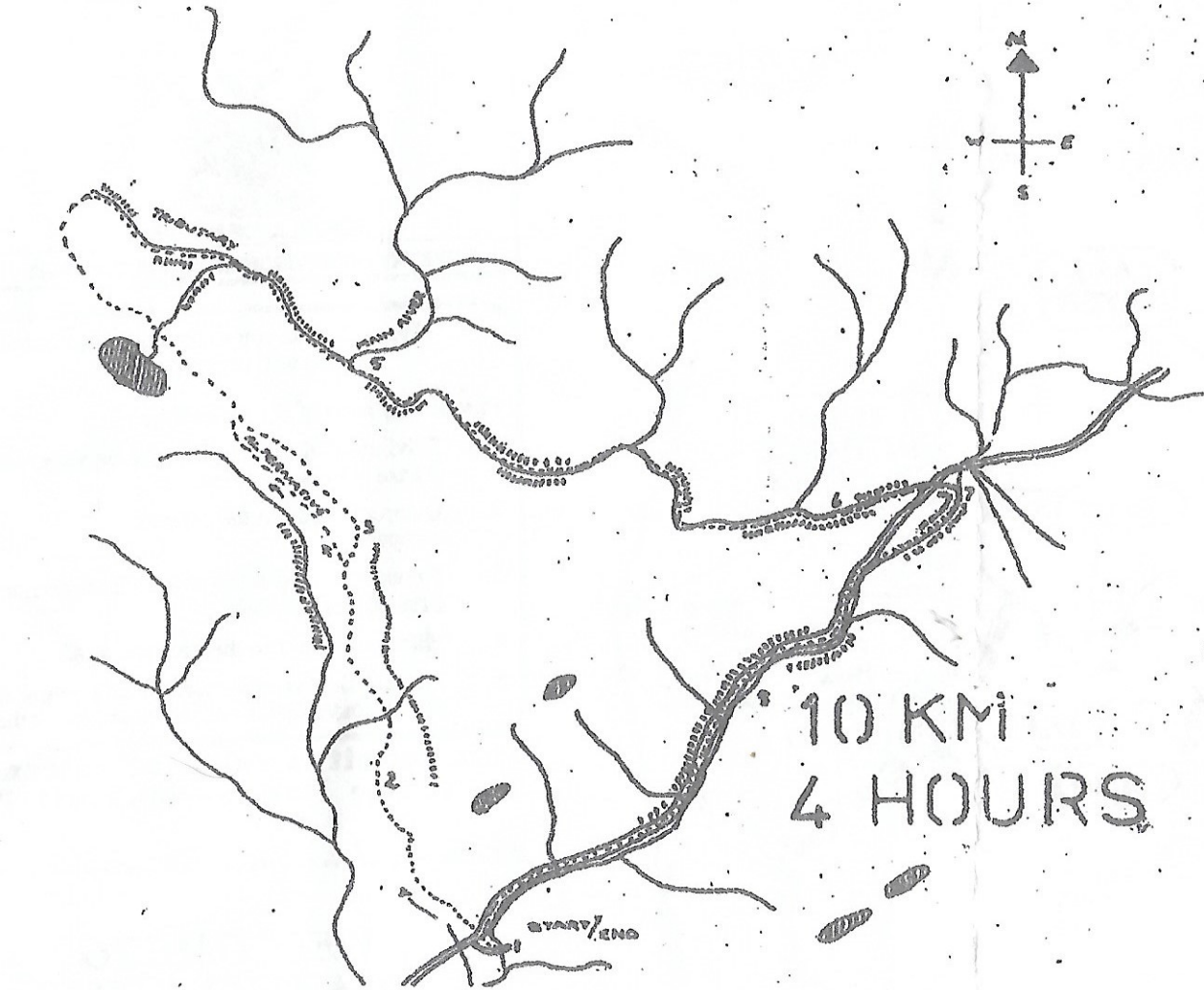


We welcome you to Naukluft and hope you enjoy your visit.

Please adhere to the following conditions of entry:

1. Do not drive off the road.
2. Overnight only at the official campsite.
3. Do not collect firewood in the park.
4. Do not pick, collect or damage any plant.
5. Do not litter, bury or leave garbage behind other than in bins provided.
6. Do not make fires anywhere than in the fireplaces in the campsites.
7. Do not kill, disturb or injure any animal.
8. Do not enter an area which is closed by a sign or a notice.
9. Do not make undue noise, disturb inconvenience others.
10. Please obey the lawful commands of the Resorts Officer or Nature Conservation Official.

**NOTICE: YOU VISIT THIS PARK AT YOUR OWN RISK AND THE STATE IS NOT RESPONSIBLE FOR ANY DAMAMGE OR LOSS YOU MIGHT INCUR.**



**OLIVE TRAIL**  
trail direction: clockwise

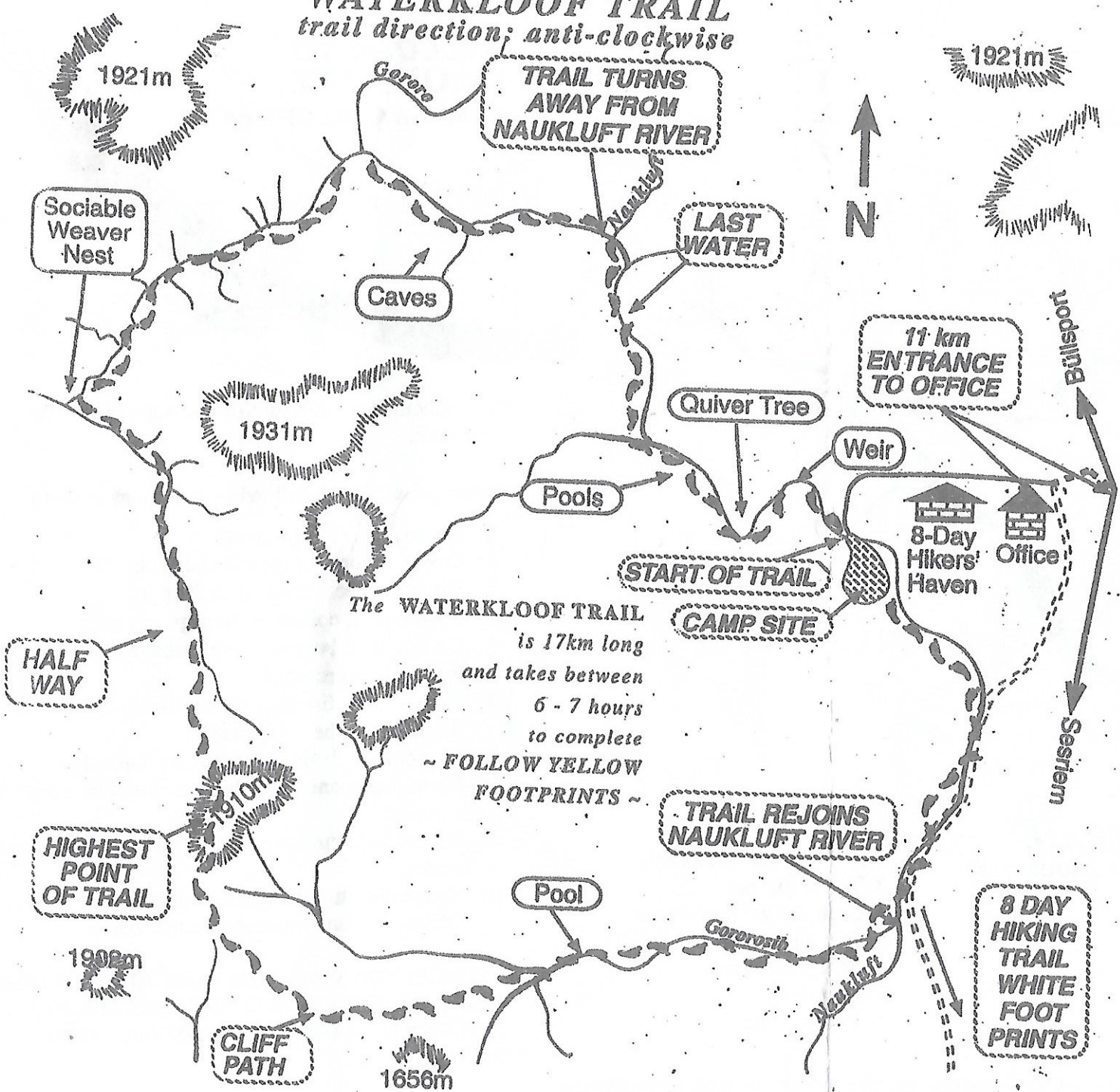
1. Parking area
2. Path on side of moutain
3. Top of plateau
4. Socialiable Weaver nest
5. Join main river
6. Pool with chains
7. Foutain
8. Plateau road

LAND ABOVE 1 900m

PLEASE carry sufficient water with you as the water in the pools is not drinkable

# WATERKLOOF TRAIL

trail direction; anti-clockwise



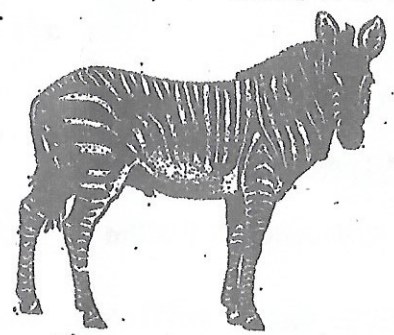
The WATERKLOOF TRAIL is 17km long and takes between 6 - 7 hours to complete  
 ~ FOLLOW YELLOW FOOTPRINTS ~



- We welcome you to Naukluft and hope you will enjoy your visit
- Please take note of the following:
1. Driving off the road damages the vegetation. Please stay on the road.
  2. Overnight only at the official campsite.
  3. Firewood is sold at the office. Please do not collect firewood in the Park.
  4. Place your litter in the bins provided.
  5. Please consider other visitors and do not make undue noise, disturb or inconvenience others.

This permit is valid for entrance to the entire Namib-Naukluft Park.  
 From:...../...../..... To:...../...../.....

WELCOME TO  
**NAUKLUFT**  
 NAMIB ~ NAUKLUFT PARK



Hartmann's Mountain Zebra